



FM21^e is built to answer the needs of highly demanding applications in the aspect of transaction & data speed, number of peripheral connection, management data & security, flexibility of operation and flexibility of future expansion. Maximum AD conversion speed up to 480 times per second plus 9 filter strength levels to meet almost all requirements from high-resolution static weighing to high-speed dynamic applications.

User definable PC output protocol means unsurpassed capability to meet all data format requirements from remote displays, production management to ERP systems.

Built-in non-resettable memory to store all details of up to 130,000+ transactions. Daily, monthly and specific period reports can be recalled and generated anytime according to your search criteria.

Independently Configurable Function Modes

- Static & Dynamic Weighing
- Piece Counting
- Action-Tare-Memory (ATM)
- Peak Measuring
- Grading and Sorting up to 10 Set Points and 8
- Grades Checking Function for Weighing, Piece Counting, ATM, Grading, and Sorting Function

Built-In Control Logic

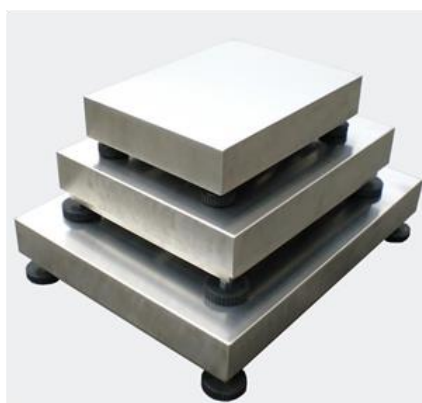
- Static and Dynamic Check
- Inflow and Outflow Control
- Constant Feeding
- Constant Dispensing with Auto Refilling,
- Dual Speed Filling
- Batching up to 8 Ingredients
- Dual Speed Discharge
- Discharge and Refill
- User Programmable Logic for each and

Displays and Indications

- 1 Primary plus 2 Secondary Displays provide Clear Information about Results, Settings, and Next Target
- Value of the Current Operation
- Tri-Color Check Result Light Bars Present Pin-Point Accuracy about where and how far the Current Weight is and away from the Target Value
- Zero, Net, Weight Unit, Memory, Lo Battery, Relay Output and Charge Status Indicators

Connectivity

- Maximum 4 independent configurable comports.
Maximum Baud Rate = 921600
- Hardwire Connection Types (standard) include RS232, RS485 and TTL
- Wireless Communication Types (optional) include Bluetooth 2.0 /4.0 and WIFI
- Optional isolated RS232 to Ensure High Speed Data
- Communication even in a High Interference Environment
- Optional Built-in 8-Channel Control Relay Board.



Management Features

- 130000+ Non-Resettable Transaction Memory
- Daily, Monthly, specific Period Report Output
- Multi Search Criteria for Report Generation
- Configurable Machine ID, Machine Group and Operator Number to Enhance Ease of Multi-Scales Applications and Management Records
- Customer & Product Code Input through Serial Scanner, Keypad or Barcode Reader
- Customer & Product Code Support Numbers, Alphabets and Selected Symbols
- Quick Access PLUs for Weight Limits, Quantity Limits and Preset Tare Values
- Direct PLUs for Customer & Product Codes
- Check Result Control for Accumulation, Data Printout & Data Output
- Keypad Lock Function
- Support Inquiry, Setting and Execution Commands from PC
- All Current Operation Results Output in Data Base Format Increases Ease & Efficiency of Data Management, Processing & Analysis
- Support Ticket Printer and Label Printer (Datex LP-50 & TSC TDP-225, TDP-247, TDP-345, TTP-225, TTP-247, TTP-345)
- Selectable Portrait / Landscape Ticket Printout Format
- 10 x Built-in Predefined Continuous / Internal Output Protocol
- User Programmable Continuous / Internal Output Protocol

K Series Scale:

Key Features

- #304 Stainless Steel Construction, Platter and Pillar (Optional)
- Equipped with OIML C3 Approved 17-4PH Stainless Steel Load Cell
- Complete Sealed Design, to Prevent Liquid Penetrate into Platform Structure
- Rugged Structure for Harsh and Rugged Environment
- Overload Protection Devices to Withstand Shock and Overloads
- Safe Overload = 150% plus
- Ultimate Overload = 200% plus Adjustable Feet and Bubble Level Included

FM21^e Digital Weighing Indicator Scale

Model No.	Capacity (kg)	Readability (kg)	Platform Dimension (mm)
FM21e-30K	30	5g	420 x 520mm
FM21e-60K	60	10g	
FM21e-150K	150	20g	
FM21e-300K	300	50g	
FM21e-30K	30	5g	500 x 600mm 600 x 600mm
FM21e-60K	60	10g	
FM21e-150K	150	20g	
FM21e-300K	300	50g	
FM21e-60K	60	5g	600 x 800mm 500 x 700mm 900 x 900mm
FM21e-150K	150	10g	
FM21e-300K	300	20g	
FM21e-500K	500	50g	
Operating Environment	0~40°C (32~104°F) Non Condensing R.H. ≤85%		

Specifications subject to change prior to notice

	Global Asia Trading Company # 508, Motaleb Mansion, 2 Ram Krishna Mission Road, Motijheel, Dhaka 1203, Bangladesh. Website : www.gatcobd.com E-Mail : info@gatcobd.com Contact : +88 01711 531 809
---	--